

Construction Works and Services

Quick Start Guide

June 2020



Crown
Commercial
Service

Contents

- Overview
- Key Benefits
- Who can access the Framework?
- Pricing Structure
- Support
- Registration Process
- Call Off Process
- Lot Structure and Suppliers

Overview Framework Scope

OJEU compliant framework for Central Government and Wider Public Sector Construction Works.



- Individual lots are divided into regional sub-lots appropriate to the market sector and value range.
- Access to over 130 pre-qualified suppliers.
- 40% of suppliers are SMEs

Overview – Procurement Routes

The flexible structure is designed to meet all procurement routes, tendering methods, design methodologies and payment arrangements.

Single Stage

Design & Build

Lump Sum Cost

Pain / Gain

Two Stage

Target Cost

Fully Designed

Guaranteed Maximum Price



All of the most commonly used standard forms of contract are available at call-off.

Overview – Policy & Contract

The framework is endorsed by the Cabinet Office and implements key government policies and strategies:

Building Information Modelling (BIM)

Project Bank Accounts

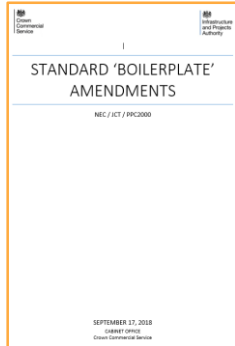
Life Cycle Approach

Social Value

Net Zero Carbon

Prompt Payment

Early Contractor Involvement



- Fair Payment
- Admittance to Affected Property
- Freedom of Information
- Official Secrets
- Confidentiality and Information Sharing
- Security Requirements
- Prevention of Fraud and Bribery
- Tax Compliance
- Intellectual Property Rights
- Contracts (Rights of Third Parties)
- BIM
- Apprenticeships
- 'Construction Act 2015'
- SMEs
- GDPR
- Cyber Essentials

Standard common boilerplate clauses are included for areas such as GDPR and Intellectual Property Rights.

Individual customers have the freedom to include additional project or customer specific contract amendments.

'Z' clauses

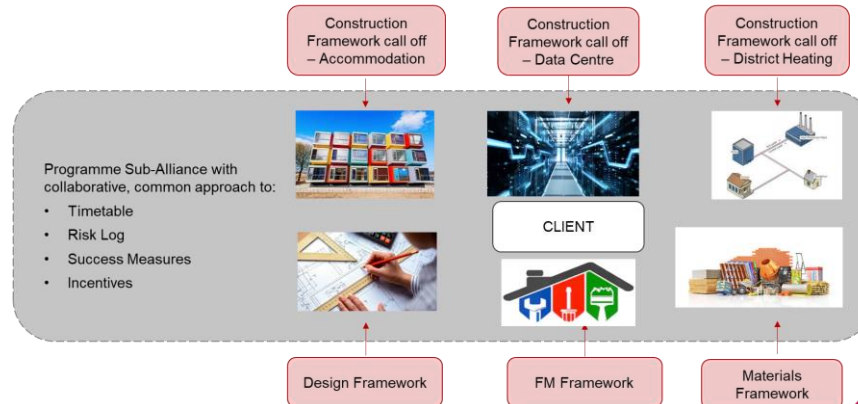
Overview – Alliancing & Collaboration



The CWAS Framework is founded on an Alliance structure to promote collaborative behaviour between Clients, Suppliers and Framework Managers.

It aligns Suppliers and Clients in achieving agreed success measures for each lot and drives continuous improvement of both the framework and industry.

It includes optional, advanced, innovative contract arrangements, allowing customers to procure programmes of work as self-managed sub-alliances to increase consistency, efficiency and improved value and performance.



Key Benefits

- **Speed of access** to market
- **Free** to use for Clients; market-leading 0.2% levy
- Simple **tender shortlisting** facility
- **Direct Award** or **Competitive Award**
- **Pre-agreed capped contract rates** for overhead & profit and labour charges
- Supported by **highly qualified procurement and technical support team** to work with Clients from the outset to achieve best outcomes
- **Advanced alliancing** capability
- **Integration with full suite of construction services**, including:
 - Project Management & Design Services
 - Modular / Off-Site Construction
 - Building Materials & Equipment
 - Facilities and Estate Management

Who can access the Framework?

All UK Central Government Departments, executive agencies and non-departmental public bodies

Devolved administrations

Local Government

Health Sector (NHS)

Nuclear

Public Corporations

Third Sector (Charities)

Fire & Rescue Services

Police Forces

Further and Higher Education

Education Sector

Delivery Agencies on behalf of Public Bodies

***This list is not exhaustive (see OJEU Contract Notice customer listing)**

Pricing Structure

Capped prices are provided in respect of:

- Overhead, profit and fee percentages
- Hourly rates in respect of staff costs, design costs and site labour costs

Once Clients have joined the Framework Alliance, they have access to the extensive CCS support network and tendered prices of each supplier, but are under no obligation to use the framework for their future projects.

Support



Simple Registration and Call-Off Process

1

- Join the Construction Alliance to access the Framework
- Gain access to Framework Suppliers' fees and prices
- Typically within 24 hrs

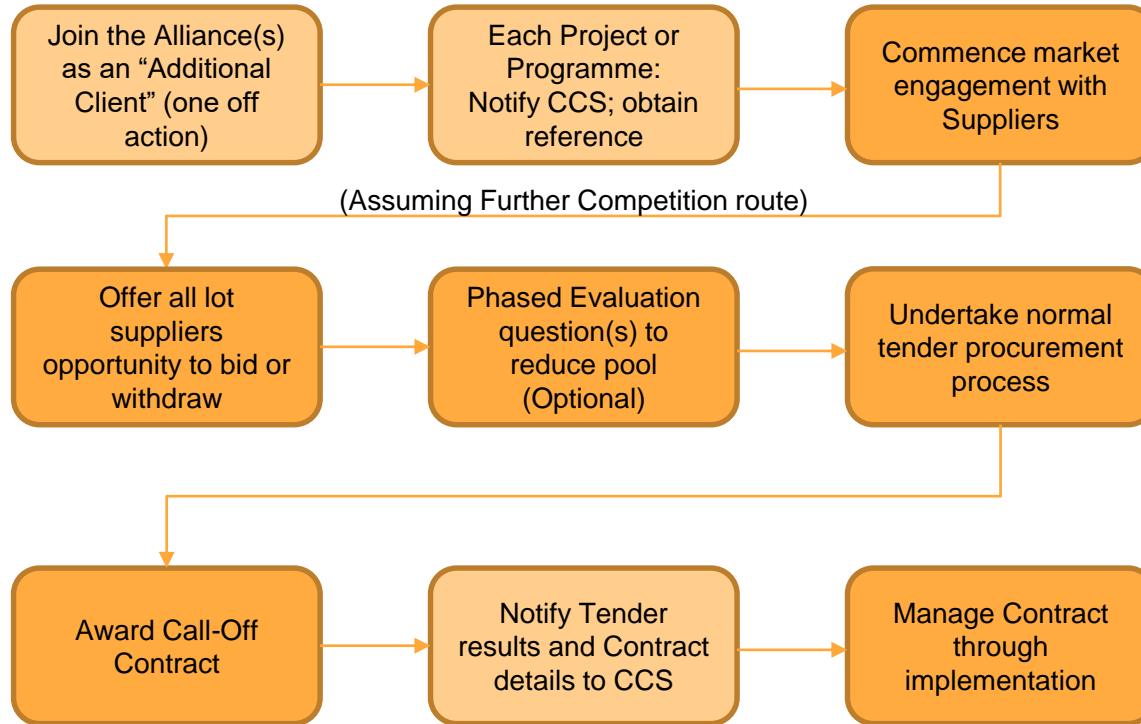
2

- When you want to call off from the Framework
- Complete User Agreement and obtain project reference
- Typically within 24 hrs

3

- Commence Supplier engagement
- Run procurement
- Advise CCS of results at award

Call-Off Process



Lot Structure and Suppliers



Lot 1.1
Building Works



Projects up to £3m

Up to 20 suppliers- National Delivery Lot



Lot 1.2
Civil Engineering Works



Up to 20 suppliers- National Delivery Lot



Lot 2
General Construction Works



Projects between £3 - £10m

Up to 12 suppliers per regional sub-lot



Lot 3
General Construction Works



Projects Between £10- £30m

Up to 12 suppliers per regional sub-lot



Lot 4
General Construction Works



Projects Between £30- £80m

Up to 12 suppliers per regional sub-lot



Lot 5
General Construction Works



Projects over £80m

Up to 12 suppliers- National Delivery Lot



Lot 6
Residential Works



Up to 12 suppliers per regional sub-lot



Lot 7
High Rise Accommodation Works



Up to 12 suppliers per regional sub-lot



Lot 8
Maritime Works



Up to 6 suppliers National Delivery Lot



Lot 9
Airside Works



Up to 6 suppliers National Delivery Lot



Lot 10
Demolition and Decommissioning



Up to 20 suppliers- National Delivery Lot



Lot 11
Construction Management



Up to 20 suppliers- National Delivery Lot

Appendix 1 – Lot Suppliers

The following quick reference lists are accurate as at June 2020.

Suppliers are occasionally removed from lots e.g. if they cease trading.

Before commencing a procurement, please refer to [our website](#) for the current list of suppliers and contact details.

Appendix 1 – Lot Suppliers

Lot 1.1: Building Works & Minor Associated Civil Engineering Works & Services (£0 - £3M)

1.1.1: North England	1.1.2: South England	1.1.3: Wales	1.1.4: Scotland	1.1.5: N. Ireland
<p>Amey Defence Services Limited Esh Construction Limited F. Parkinson Limited FES Support Services Limited Flanagan Building & Maintenance Services Ltd Hargreaves Contracting Limited J C A Engineering Ltd J. Tomlinson Limited Kier Services Limited Krol Corlett Construction Limited Mears Limited Morris & Spottiswood Limited MPH Construction Limited Nationwide Rail Limited NMCN Olivet Construction Limited Rosslee Construction Seddon Construction Limited Stepnell Limited Walter Carefoot & Sons (Construction) Limited</p>	<p>Amey Defence Services Limited Ashe Construction Limited Beard Borras Construction Ltd. Conamar Building Services Limited ETEC Contract Services Limited FES Support Services Limited Glenman Corporation Limited H.A.Marks Limited J C A Engineering Ltd Kier Services Limited Logan Construction (South East) Ltd MD Group Mears Limited Michael Brady Ltd. Mulalley & Co. Limited NFC Homes Limited Pentaco Construction Limited Standage & Co. Limited Stepnell Limited</p>	<p>Amey Defence Services Limited Kier Services Limited MPH Construction Limited Nationwide Rail Limited</p>	<p>Amey Defence Services Limited CHAP Group (Aberdeen) Ltd Clark Contracts Limited D. McLaughlin & Sons Limited FES Support Services Limited GHI Contracts Limited Kier Services Limited Maxi Construction Limited Morris & Spottiswood Limited</p>	<p>Amey Defence Services Limited Connolly & Fee Limited G F Wilson Limited P.K. Murphy Construction Limited</p>



Appendix 1 – Lot Suppliers

Lot 1.2: Civil Engineering Works & Minor Associated Building Works & Services (£0 - £3M)

1.2.1: North England	1.2.2: South England	1.2.3: Wales	1.2.4: Scotland	1.2.5: N. Ireland
<p>A.E.Yates,limited Colas Limited Dyer And Butler Limited Eric Wright Civil Engineering Limited Fitzgerald Contractors Limited Jackson Civil Engineering Group Limited Kier Integrated Services Limited PBS Construction (North East) Limited Seymour (Civil Engineering Contractors) Ltd. The Casey Group Limited</p>	<p>Associated Asphalt Contracting Ltd B.C.M. Construction Ltd. Colas Limited Dyer And Butler Limited F M Conway Limited J.T.Mackley & Co.Limited Jackson Civil Engineering Group Limited Kier Integrated Services Limited Mildren Construction Limited Ryebridge Limited TS Civil Engineering Limited</p>	<p>B.C.M. Construction Ltd. Dyer And Butler Limited Kier Integrated Services Limited</p>	<p>Covanburn Contracts Limited Cubby Construction Limited Luddon Construction Limited MAC Asphalt Limited R.J. McLeod (Contractors) Limited</p>	<p>Whitemountain Quarries Ltd</p>

Appendix 1 – Lot Suppliers

Lot 2: Construction Works & Associated Services (£3 - £10M)

2.1: North England	2.2: South England	2.3: Wales	2.4: Scotland	2.5: N. Ireland
<p>Conlon Construction Limited G.F. Tomlinson Building Limited Galliford Try Construction Limited Henry Boot Construction Limited Henry Brothers Limited Interserve Construction Limited ISG Construction Limited Jeakins Weir Limited Kier Construction Limited McLaughlin & Harvey Limited Speller Metcalfe Limited Wates Construction Limited Willmott Dixon Construction Limited</p>	<p>8Build Limited Engie Regeneration Limited Graham Henry Brothers Limited Interserve Construction Limited ISG Construction Limited Mace Limited McLaughlin & Harvey Limited R.G. Carter Construction Limited Rydon Construction Limited VINCI Facilities Volker Fitzpatrick Limited</p>	<p>BAM Construction Limited Engie Regeneration Limited Interserve Construction Limited ISG Construction Limited J.N. Bentley Limited Kier Construction Limited Knights Brown Construction Ltd Morgan Sindall Construction & Infrastructure Ltd Tarmac Trading Limited VINCI Facilities Wates Construction Limited Willmott Dixon Construction Limited</p>	<p>Bowmer and Kirkland Limited Galliford Try Construction Limited George Sharkey & Sons Limited Graham Henry Brothers Limited Heron Bros. Limited Interserve Construction Limited ISG Construction Limited Kier Construction Limited McLaughlin & Harvey Limited Morgan Sindall Construction & Infrastructure Ltd Robertson Construction Group Limited Wates Construction Limited</p>	<p>CTS Projects Limited Dawson-Wam Ltd Felix O'Hare & Company Limited FP McCann Limited Graham H & J Martin Construction Limited Henry Brothers Limited Heron Bros. Limited McLaughlin & Harvey Limited Tarmac Trading Limited</p>

Appendix 1 – Lot Suppliers

Lot 3: Construction Works & Associated Services (£10 – £30M)

3.1: North England	3.2: South England	3.3: Wales	3.4: Scotland	3.5: N. Ireland
<p>Balfour Beatty Construction Limited BAM Construction Limited Bouygues (U.K.) Limited Galliford Try Construction Limited Graham Henry Boot Construction Limited Henry Brothers Limited Interserve Construction Limited ISG Construction Limited Kier Construction Limited Laing O'Rourke Construction Limited McLaughlin & Harvey Limited Russells Limited Wates Construction Limited</p>	<p>Balfour Beatty Construction Limited BAM Construction Limited Bouygues (U.K.) Limited Galliford Try Construction Limited Graham Interserve Construction Limited ISG Construction Limited John Sisk & Son Limited Kier Construction Limited Laing O'Rourke Construction Limited McLaughlin & Harvey Limited Midas Construction Limited R.G. Carter Construction Limited Skanska Construction UK Limited Speller Metcalfe Limited Tarmac Trading Limited Volker Fitzpatrick Limited Wates Construction Limited Willmott Dixon Construction Limited</p>	<p>BAM Construction Limited Bouygues (U.K.) Limited Galliford Try Construction Limited Interserve Construction Limited ISG Construction Limited Kier Construction Limited Laing O'Rourke Construction Limited Midas Construction Limited Morgan Sindall Construction & Infrastructure Ltd Tarmac Trading Limited VINCI Facilities Willmott Dixon Construction Limited</p>	<p>Balfour Beatty Construction Limited BAM Construction Limited Bowmer And Kirkland Limited Galliford Try Construction Limited Graham Heron Bros. Limited Interserve Construction Limited ISG Construction Limited Kier Construction Limited McLaughlin & Harvey Limited Morgan Sindall Construction & Infrastructure Ltd Robertson Construction Group Limited Tarmac Trading Limited</p>	<p>BAM Construction Limited Felix O'Hare & Company Limited Graham H & J Martin Construction Limited Heron Bros. Limited McLaughlin & Harvey Limited Tarmac Trading Limited</p>

Appendix 1 – Lot Suppliers

Lot 4: Construction Works & Associated Services (£30 - £80M)

4.1: England & Wales

Balfour Beatty Construction Limited
BAM Construction Limited
Bouygues (U.K.) Limited
Galliford Try Construction Limited
Graham
Interserve Construction Limited
ISG Construction Limited
Kier Construction Limited
Laing O'Rourke Construction Limited
McLaughlin & Harvey Limited
Skanska Construction UK Limited
Tarmac Trading Limited
Wates Construction Limited
Willmott Dixon Construction Limited

4.2: Scotland

Balfour Beatty Construction Limited
BAM Construction Limited
Bowmer And Kirkland Limited
Galliford Try Construction Limited
Graham
Interserve Construction Limited
Kier Construction Limited
McLaughlin & Harvey Limited
Morgan Sindall Construction & Infrastructure Ltd
Robertson Construction Group Limited
Sir Robert McAlpine Limited
Tarmac Trading Limited

4.3: N. Ireland

BAM Construction Limited
Graham
McLaughlin & Harvey Limited
Tarmac Trading Limited

Appendix 1 – Lot Suppliers

Lot 5: Construction Works & Associated Services (£80M+)

National:

Balfour Beatty Construction Limited

BAM Construction Limited

Bouygues (U.K.) Limited

Bowmer And Kirkland Limited

Galliford Try Construction Limited

Graham

Interserve Construction Limited

ISG Construction Limited

Kier Construction Limited

Laing O'Rourke Construction Limited

Mace Limited

Skanska Construction UK Limited

Tarmac Trading Limited

Wates Construction Limited



Appendix 1 – Lot Suppliers

Lot 6: Residential

6.1: North England	6.2: South England	6.3: Wales	6.4: Scotland	6.5: N. Ireland
<p>Engie Regeneration Limited Esh Construction Limited Galliford Try Construction Limited Interserve Construction Limited Morgan Sindall Construction & Infrastructure Ltd NMCN Speller Metcalfe Limited The Casey Group Limited United Living (North) Limited VINCI Facilities Wates Construction Limited Willmott Dixon Construction Limited</p>	<p>Balfour Beatty Construction Limited Bouygues (U.K.) Limited Engie Regeneration Limited Galliford Try Construction Limited Geoffrey Osborne Limited Interserve Construction Limited Mi-Space (UK) Limited Morgan Sindall Construction & Infrastructure Ltd Neilcott Construction Limited Rydon Construction Limited Speller Metcalfe Limited VINCI Facilities Wates Construction Limited</p>	<p>Engie Regeneration Limited Mi-Space (UK) Limited Morgan Sindall Construction & Infrastructure Ltd Wates Construction Limited</p>	<p>Balfour Beatty Construction Limited Bancon Construction Limited CCG (Scotland) Limited CHAP Group (Aberdeen) Ltd Engie Regeneration Limited Graham Morgan Sindall Construction & Infrastructure Ltd</p>	<p>Connolly & Fee Limited CTS Projects Limited EHA Group P.K. Murphy Construction Limited</p>



Appendix 1 – Lot Suppliers

Lot 7: High Rise Accommodation

7.1: North England Balfour Beatty Construction Limited Bowmer And Kirkland Limited Esh Construction Limited Galliford Try Construction Limited Interserve Construction Limited John Sisk & Son Limited Kier Construction Limited Morgan Sindall Construction & Infrastructure Ltd Russells Limited Wates Construction Limited Willmott Dixon Construction Limited	7.2: South England Balfour Beatty Construction Limited Bouygues (U.K.) Limited Bowmer And Kirkland Limited Galliford Try Construction Limited Interserve Construction Limited John Sisk & Son Limited Kier Construction Limited Laing O'Rourke Construction Limited McLaren Construction Limited Morgan Sindall Construction & Infrastructure Ltd Rydon Construction Limited Wates Construction Limited Willmott Dixon Construction Limited	7.3: Wales Morgan Sindall Construction & Infrastructure Ltd	7.4: Scotland Balfour Beatty Construction Limited Graham Kier Construction Limited Morgan Sindall Construction & Infrastructure Ltd	7.5: N. Ireland No suppliers – consider using adjacent geographical lot or General Construction lots 1-5
---	---	---	--	--

Appendix 1 – Lot Suppliers

Lot 8: Maritime

National

Balfour Beatty Construction Limited

Costain Limited

Graham

Kier Construction Limited

McLaughlin & Harvey Limited

Volker Stevin Limited



Appendix 1 – Lot Suppliers

Lot 9: Airfields

National

Balfour Beatty Construction Limited

BAM Construction Limited

Kier Construction Limited

Lagan Construction Aviation Limited

McLaughlin & Harvey Limited

Volker Fitzpatrick Limited



Appendix 1 – Lot Suppliers

Lot 10: Demolition & Decommissioning

National

Aecom Limited

Amey Defence Services Limited

Connell Brothers Limited

Dem-Master Demolition Limited

Demolition Services Limited

DSM Demolition Limited

Erith Contractors Limited

KDC Contractors Limited

Keltbray Limited

McGee Group (Holdings) Limited

Rhodar Industrial Services Limited

Ryebridge Limited

Squibb Group Limited

T.E.Scudder Limited



Appendix 1 – Lot Suppliers

Lot 11: Construction Management

National

Aecom Limited
Amey Defence Services Limited
Bechtel Management Company Limited
Costain Limited
F3Construct Limited
Interserve Construction Limited
Kellogg Brown & Root Limited
Kier Construction Limited
Lendlease Construction (Europe) Limited
Mace Limited
Pick Everard
Sir Robert McAlpine Limited

The areas we work in

Buildings

- construction
- utilities & fuels
- workplace

£520m
savings by
2019/20

People

- employee services
- professional services
- workforce

£420m
savings by
2019/20

Technology

- digital future
- network services
- software
- technology products & services

£520m
savings by
2019/20

Corporate Solutions

- contact centres
- financial services
- fleet
- information content management
- marketing, communications & research
- travel

£540m
savings by
2019/20

Keep in touch

info@crowcommercial.gov.uk

0345 410 2222

www.crowcommercial.gov.uk



[@gov_procurement](https://twitter.com/gov_procurement)



[Crown Commercial Service](https://www.linkedin.com/company/crown-commercial-service)



Crown
Commercial
Service